

# Case Study Download Instructions

## Sage MAS 90 and 200 - Version 4.x

Follow the instructions below to download Case Studies for use with the Sage MAS 90 and 200 Sage Software Certified Curriculum. Complete each step in the order listed.

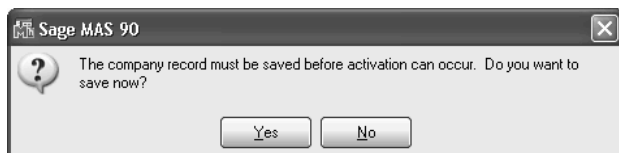
### *Setting Up the Case Study Companies in Sage MAS 90 and 200*

Create the company codes in Sage MAS 90 for each company downloaded. You must have access to Company Maintenance in Library Master to complete this step.

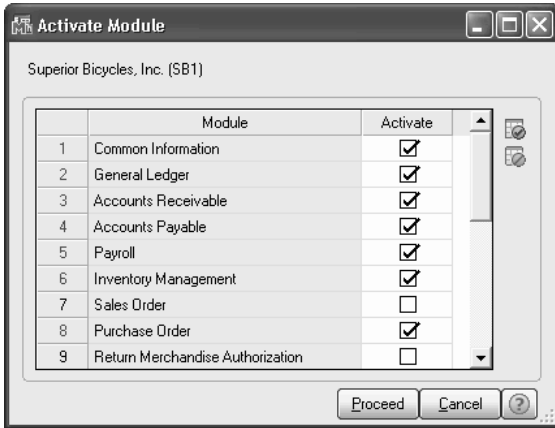
- 1) From the Library Master Main menu, select Company Maintenance.
- 2) Create the company codes exactly as displayed for the case study. For example SB1 or LAB.

The screenshot shows the 'Company Maintenance (ABC) 8/18/2006' window. The 'Company Code' is 'SB1' and the 'Company Name' is 'Superior Bicycles, Inc.'. The 'Company Information' section includes: Address (123 Main Street, Irvine, CA 92618), Telephone ( ), Fax ( ), Federal ID No. (1234-5678), and State ID No. ( ). There is also a 'URL Address' field. The 'Activated Modules' section is empty. At the bottom, there is a checkbox for 'Use as Default Company for Server Settings' and buttons for 'Accept', 'Cancel', and 'Delete'.

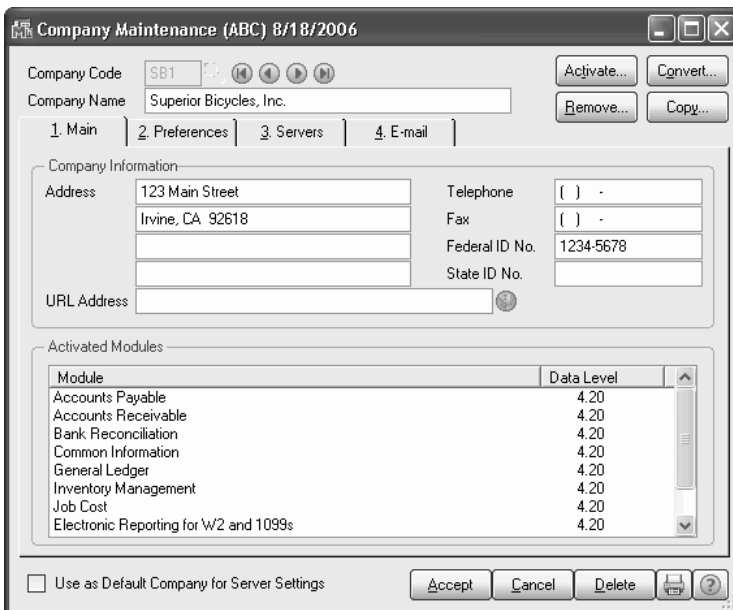
- a) For each company created, enter any fictitious company name, address, and federal ID number.
- 3) Click Activate and Yes when prompted to save the company.



4) Activate all necessary modules and click Proceed.

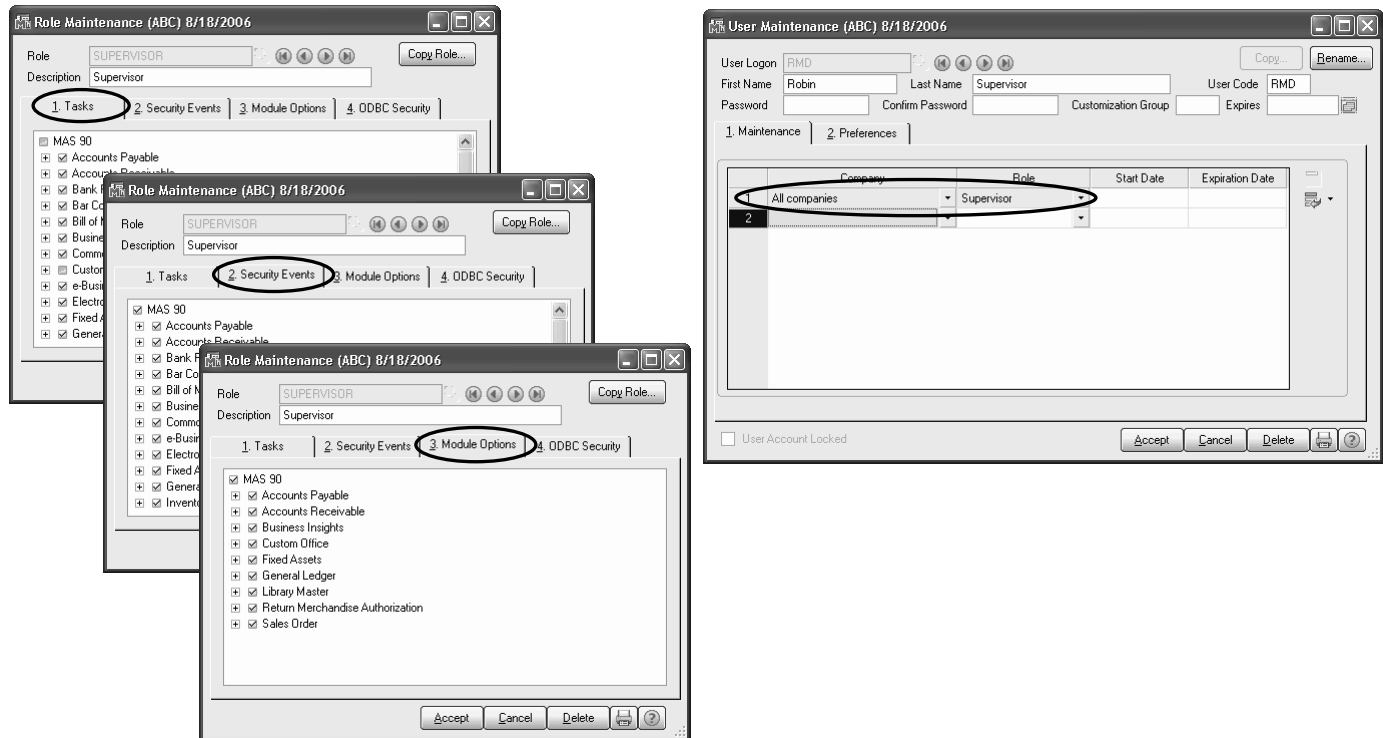


5) Verify information displays in the Activated Modules list on the Main tab in Company Maintenance and that the version level is correct.



6) Click Accept and close Company Maintenance.

If using security in Sage MAS 90, verify the security set up for user RMD allows access to all tasks, security events, and module options for the new companies created.



- Some activities may require you to select a specific user of RMD or Supervisor. This user was created for the classroom training to have full access to all tasks, security events, and module options in Sage MAS 90 and 200.
- If you cannot create these users within your installation of Sage MAS 90 or 200, substitute your logon name when prompted to select either RMD or Supervisor.
- If security is not enabled, you may not be able to complete all steps in an activity. For example, some activities may require you to create a specific user logon. If this occurs, skip the activity.

**Note:** If downloading the case study for FRx for Sage MAS 90 and 200 course curriculum, refer to the Setup instructions.

## ***Downloading the Case Study***

The instructions in this section are used when downloading the case study required for activities and labs.

- 1) If you are already on the Sage Software Training Web page, skip to step 3; otherwise, go to <http://sagesoftware.com/education> on the Internet.
- 2) Under Student Course Resources, click the Case Studies link.
- 3) Select the Sage MAS 90 ERP and Sage MAS 200 ERP as the product.
- 4) Select the appropriate case study based on the name of the class and the version of the curriculum you received. The curriculum version is printed in the footer section of the course curriculum.

For example, ***Core Applications Case Study version 10.***

- 5) After selecting the case study, the File Download window displays.
  - a) Click Run to open the file for downloading.
  - b) If security settings prevent you from opening the file, click Save to save the file to your workstation.
- 6) If you selected to open (run) the file, you are prompted automatically to unzip the files. If you save the file to your workstation, double-click on the file to access the WinZip Self-Extractor program.
  - a) If prompted that the publisher could not be verified, click Run.
  - b) Enter the directory used to store the Sage MAS 90 program and data files. For example, ***C:\Program Files\Sage Software\MAS 90\Version4\MAS90.***
    - If Sage MAS 90 is located on a server, you may need to contact your system administrator for help in downloading the files into the proper directory.
  - c) Click Unzip. This unzips the files and creates the appropriate directories under the directory selected above.
  - d) Click OK after the process is completed.
- 7) Close the WinZip Self-Extractor.