

Setup Guide

FRx for Sage MAS 90 and 200 - Version 12.0

To complete the activities in the FRx for Sage MAS 90 and 200, curriculum, review the information in this setup guide to ensure you have the correct modules, case studies, and settings defined.

Software Requirements

Software	Version
Sage MAS 90 and 200 <ul style="list-style-type: none">• Library Master• Common Information• General Ledger	4.20 4.20 4.20
FRx Case Study (SB1, SB3, FRx, and FDD)*	12.0
FRx Desktop	6.7.9011 (need service pack 09)

***Note:** Refer to the Welcome and Introduction lesson in the FRx for Sage MAS 90 and 200 course curriculum for information on downloading the case study.

You can use Sage MAS 90 and 200 Extended Enterprise Suite when using this curriculum, but be aware the curriculum has not been specifically tested with this version of the software.

Special Security Settings

Some activities may require you to select a specific user of RMD. This user was created for Sage MAS 90 classroom training to have full access to all tasks, security events, and module options.

- If you are able to create user logons and modify roles, create RMD as a user. Assign RMD to a role with full access to all tasks, security events, and module options. Provide access to all companies created as part of the case study.
- If you cannot create these users, substitute your logon name when prompted to select either RMD.
- If security is not enabled, you may not be able to complete all steps in an activity. For example, some activities may require you to create a specific user logon. If this occurs, skip the activity.

Special Setup Instructions

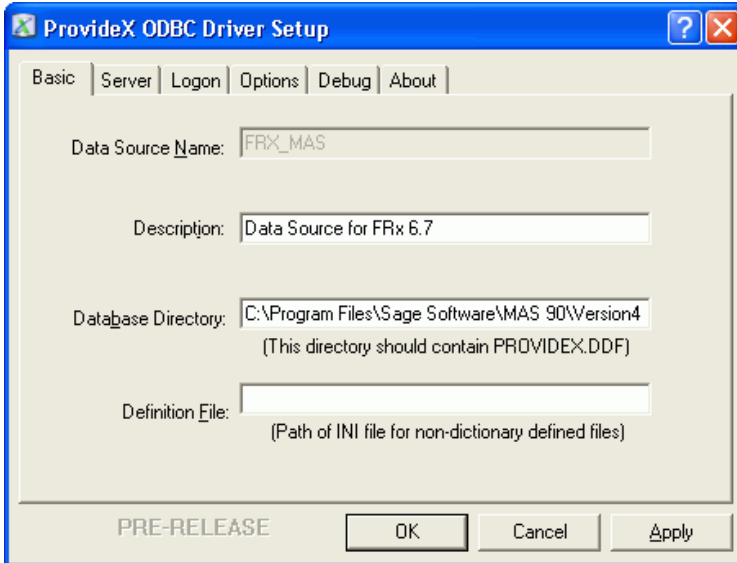
- Create an FRX_MAS System DSN. The FRX_MAS DSN is used to connect FRx to Sage MAS 90. Refer to the Creating a System DSN steps or the README file for information on how to create the System DSN.
- In Sage MAS 90 or 200, select the Allow External Access check box on the Preferences tab in Company Maintenance for the SB1, SB3, and FDD companies. You must select this check box to use each company's data in FRx.
- Create a TEMP folder on the local drive. This is used to extract the executable files from the web.
- Extract the data files from the web to the TEMP directory.
- Copy the MAS_FRX, MAS_SB1, MAS_SB3, and MAS_FDD data files to the \MAS90 folder from the TEMP folder.
- Copy the FRX Excel Worksheets and BEG_SPEC files to the IO_DATA folder in FRx from the TEMP folder. (C:\Program Files\FRx Software\FRx6.7\IO_DATA directory)
- Set up the FDD company in FRx. Refer to the FDD Setup steps for information on how to set up the FDD company in FRx.

Creating a System DSN

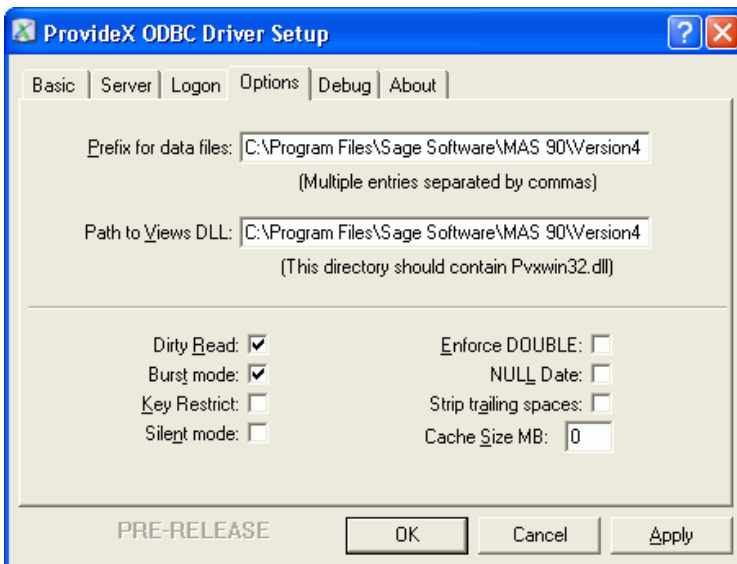
After installing FRx Financial Reporter 6.7 you will need to perform the following modifications in your Company Information screen on the System Specific Information tab to create an ODBC data source connecting to your Sage MAS 90 or 200 database.

1. Open FRx and select Company Information from the toolbar.
2. Click the System Specific Information tab.
3. Clear the Data Source Name field and click the Define button.
4. Click the System DSN tab.
5. Click the Add button.
6. Double-click the MAS 90 4.0 ODBC driver. If this option is not available, run wksetup or install Sage MAS 90 or 200.

7. Enter the information similar to the figure below. (Enter the path to the \MAS90 folder that you have installed in the Database Directory field).



8. Click the Options tab and enter the path to the \MAS90 folder adding \SOA at the end of the path.
9. At the Views DLL field, enter the path to the \MAS90 folder adding \HOME at the end of the path.
10. Select the Dirty Read and Burst mode check boxes. See the figure below.



11. Click the Apply button and click OK.
12. Select the newly created data source from the drop down box at the Data Source Name field.
13. Set the company as default.

Note: You must enter a valid Data Source Name for each company. You can use the same Data Source for multiple companies within a Sage MAS 90 installation.

Company Setup

Follow the steps below to set up the FDD company within FRx. Complete each step in the order listed. Repeat these steps for the FRx, SB1 and SB3 companies.

1. Log on to FRx.
2. From the Company menu, select Information.
3. Click New.
4. Enter FDD as the FRx company code and FDD Company as the company name.
5. From the Specification Set drop down list in the FRx System Information tab, select FDD as the specification set.
6. Click the System Specific Information tab and enter FDD as the company.
7. Select the drop down list from the Data Source field and select FRX_MAS (or the DSN you created) as the data source to the MAS90 directory.

Note: If using FRx with multiple installations of Sage MAS 90 and 200, it is recommended to create a separate DSN to access those files. Refer to the README document included with the FRx installation for information on how to create a System DSN.

8. Click Save and click Save as Default.

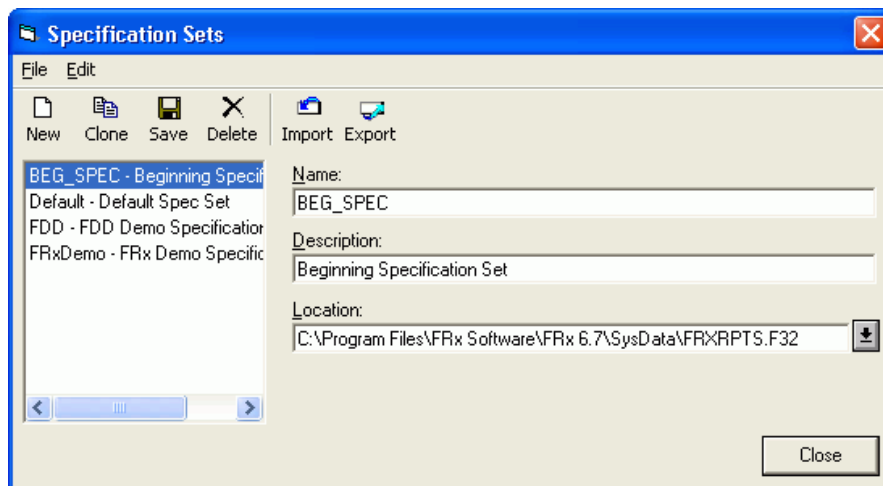
Note: You will use FDD for in-class activities.

9. Close Company Information.

Creating a Specification Set

You must create the following specification sets for use with the Sage MAS 90 companies.

- From the Company menu in FRx, select Specification Sets. Define the following specification set.



- Save the new specification set and select the Import button to import the file from the Beg_Spec.tdb now located in the IO_Data directory.

- Create an FDD company and set up FDD as the default specification set in FRx under Company > Information. Verify setting under the System Specification Information tab for the FDD company in FRx.
- Create the companies FRX and SB3 and assign the BEG_SPEC specification set to the FRx company. Use the information on the following page.

